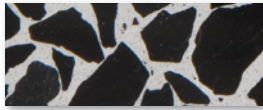


ECCOTERR® TILES

COVERINGSETC

## STANDARD



Bergamo Black



Coco Cream



Diamante



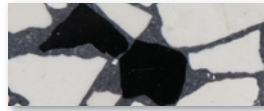
Emperador Brown



Fontana White



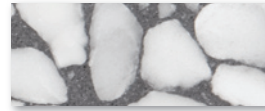
Hillcrest Grey



Murano White



Periwinkle



Silverado Black



Venetian Beach

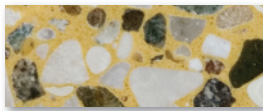


Zuma Beach

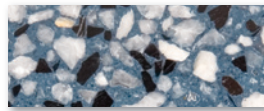


Venetian Replica

## SPECIAL ORDER



Aztec Yellow



Côte d'Azur



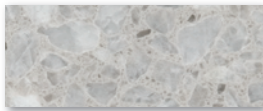
Crema di Parma



Evergreen



Ming Red



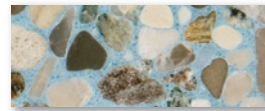
Misty Grey



Moor Green



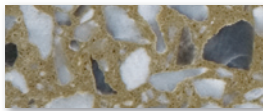
Ocean Gem



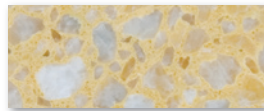
Olympia Blue



Oyster White



Safari Green



Solare Yellow

### AVAILABLE SIZES

16" x 16" x 5/8"

24" x 24" x 3/4"

### FINISH

Polished

Brushed, Honed, Sandblasted available on special order

## OVERVIEW

Embrace quality and style with Eco-Terr® flooring and countertops. Eco-Terr® is a Future-Friendly™ material made of recycled natural stone aggregates. Durable, zero VOC materials, non-porous cleanable finish does not support microbial growth, nor allow moisture to accumulate, helping to maintain a mold-free environment with improved indoor air quality. Contains pre-consumer recycled content; may help contribute toward LEED® credits with USGBC project certification.

## SPECIFICATIONS

Coefficient of Friction	ASTM C-1028	Polished	Dry: 0.64; Wet: 0.61
		Honed	Dry: 0.71; Wet: 0.68
		Sandblasted	Dry: 0.74; Wet: 0.70
Resistance to Fire	ASTM Class 0		
Freeze-Thaw	ASTM C-666	None (300 cycles)	
Compressive Strength	ASTM C-170	14,000 - 24,000 psi	
Modulus of Rupture	ASTM C-99	1,550 psi	
Flexural Strength	ASTM C-880	1,973 psi	
Water Absorption	ASTM C-97	3.2 %	



- \* Approximate laboratory test values.
- \* Colors may not print accurately. Please request sample.
- \* Recycled content may cause slight color variation.

