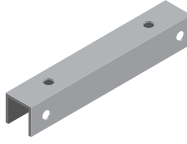


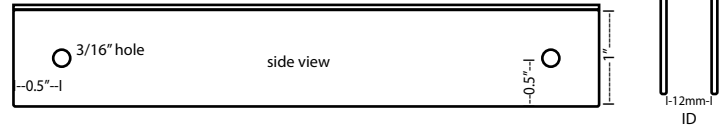
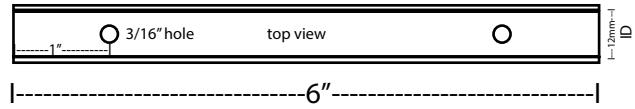
ECHOPANEL SIMPLE BAFFLE U-CHANNEL SELECTION GUIDE

Use our U-Channel mounting brackets to attach EchoPanel Simple Baffles to ceilings and other surfaces using cable or other mounting hardware.

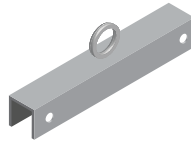
DUC: Direct Mount U-Channel



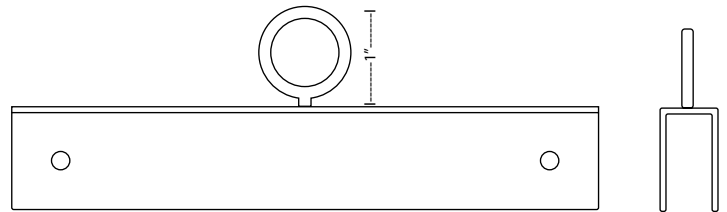
The Direct Mount U-Channel (DUC) Bracket offers a flush, low profile mounting ideal for direct attachment to hard surface ceilings.



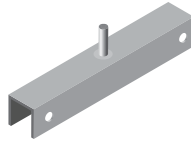
EUC: Eyebolt U-Channel



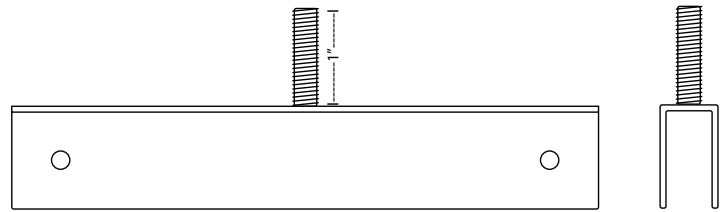
The Eyelet U-Channel (EUC) Bracket can be paired with a looped aircraft cable, s-hook or chain, providing a fast and simple hanging solution.



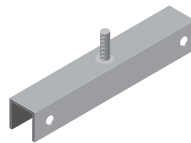
MUC: Male U-Channel



The Male U-Channel (MUC) Bracket is designed for compatibility with a variety of standard 1/4"-20 thread-based mounting hardware, including ACT grid mounting clips.



FUC: Female U-Channel



The Female U-Channel (FUC) Bracket is designed for compatibility with a variety of standard 1/4"-20 thread-based mounting hardware, including ACT grid mounting clips, threaded rod ceiling anchors or 1/4"-20 eyebolt, enabling easy adjustment when paired with cables or chain.



GOT ACT?

If you have an ACT grid ceiling, the FUC bracket can be used to hang baffles or screens. Pair an ACT grid clip (compatible with 9/16" and 15/16" grid) and the FUC bracket.

