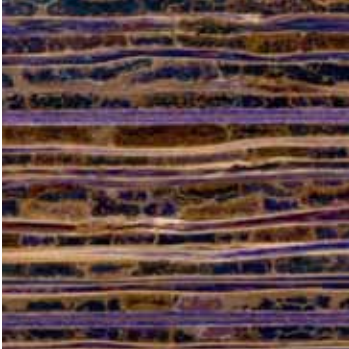
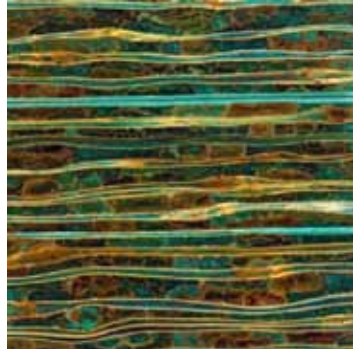


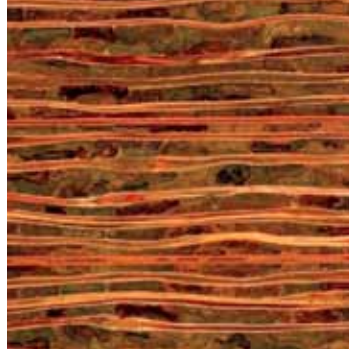
**SPECIALTY COLORS**  
TIKERI



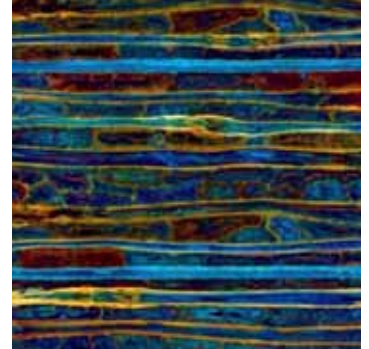
Amethyst



Emerald

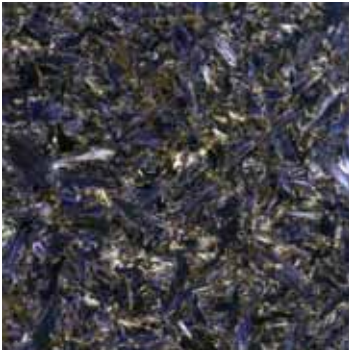


Ruby



Sapphire

HEMP



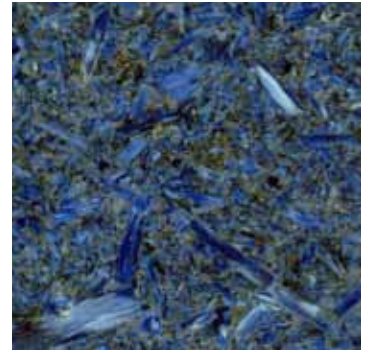
Amethyst



Emerald



Ruby



Sapphire

ORIENT



Amethyst



Emerald

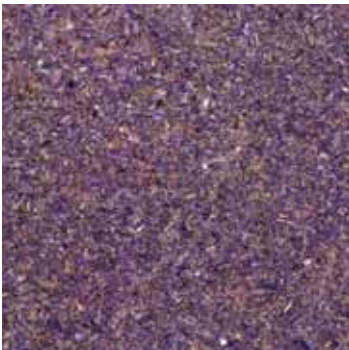


Ruby

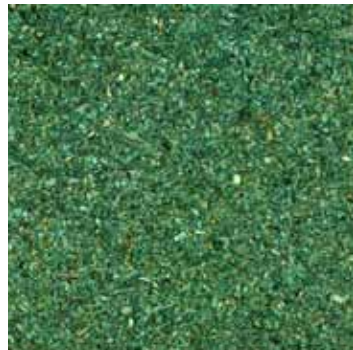


Sapphire

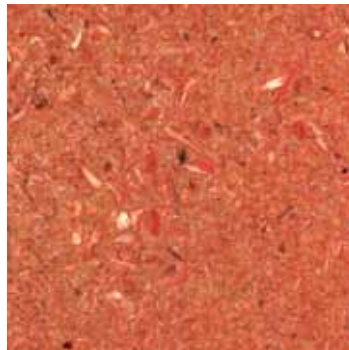
PARDA



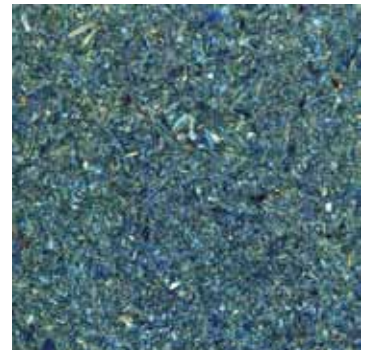
Amethyst



Emerald



Ruby



Sapphire



**SPECIALTY COLORS**

- All materials are either rapidly renewable or recycled content
- All wood products are sustainably harvested. FSC and/or SFI
- No added urea formaldehyde and non toxic dyes
- TorZo materials are infused with acrylic resin to make them incredibly hard and durable for high traffic applications
- Contributes to LEED 2009 MRc4 for recycled content, MRc7 for FSC, and IEQc4.4 for no added urea-formaldehyde
- Applications include: countertops, tables, vanities, furniture, flooring, wall cladding, partitions
- Table tops available in standard sizes including round, square and rectangle shapes
- Various sheet sizes and thicknesses available
- Flooring available for Tiikeri, Orient And Parada, Both tongue and groove and tiles.



Bar at Oro Restaurant



Bar at Nightbell

**BLUE STAIN PINE**

- Created from Salvaged wood
- Infused with TorZo's acrylic resin for extra hardness
- No added urea formaldehyde
- Contributes to LEED 2009 IEQc4.4
- Available in plank flooring: 2', 4', 6', 8' lengths x 5" width x 5/8" thick, and 4' x 8' panels
- Applications include: Flooring, wall cladding, table tops, partitions, doors, cabinetry, etc.



Blue Stain Pine



Lime Apartments