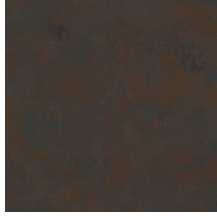




Beauty Beyond Limits

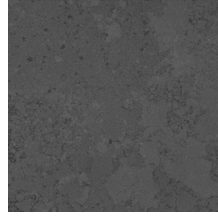
NAZCA (silk finish)



Colibri



Spyder



Pukao

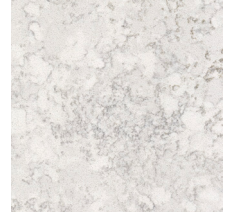
MOAI (silk finish)



Nui

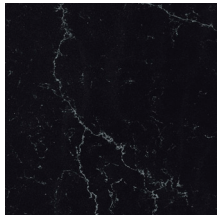


Sculpture



Eastern

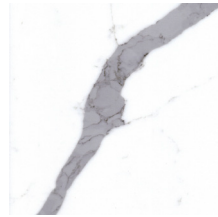
PYRAMIDS (silk finish, *polished finish)



Mask



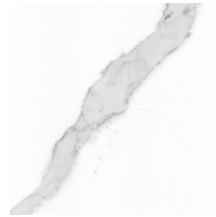
Maze



Pharaon



Keops



Ramses*



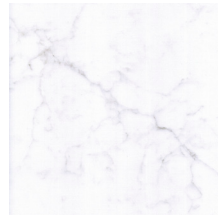
Cleopatra*



Valley*



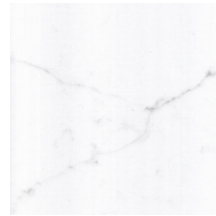
Giza*



Ra*



Nerfertiti*



Desert*



Dynasty

* Polished finish,



Sphinx*

GENERAL INFORMATION

- Unique composite material of mineral matrix and binders
- Available in three collections: Nazca (metallic patterns), Moai (cement patterns), and Pyramids (marble patterns)
- Through-body slabs with hyper realistic patterns and translucency
- Uses high-performance stain and substance repellent technology called Nano Enhancement of Surface (NEOS)

SIZES & SPECIFICATIONS

- Slabs measure 63" x 126"
- Thicknesses available: 2cm and 3cm

SUSTAINABILITY

- Notably has cut silica use in half

APPLICATIONS

- Indoor countertops for kitchens, reception areas, sales counters, bathrooms



Pyramids - Valley



Moai - Eastern



Moai - Pukao



Pyramids - Pharaon



Pyramids - Mask



Nazca - Spyder