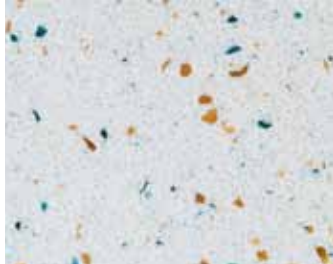
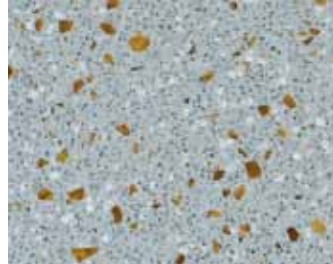


# DURAT PALACE

Available through  
**CaraGreen**  
Healthy Building Materials  
www.caragreen.com • 919.929.3009  
info@caragreen.com



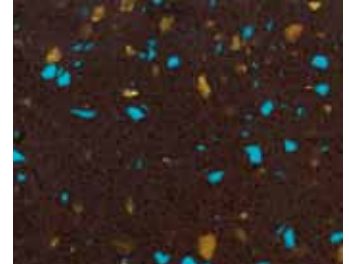
Martini, P-007



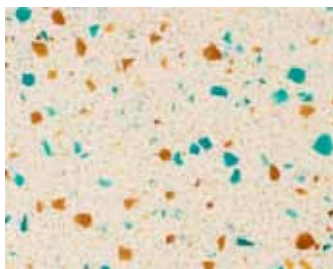
Greyhound, P-001



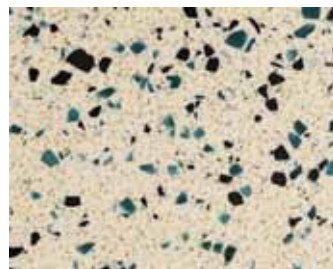
Black Velvet, P-006



Cuba Libre, P-005



Mint Julep, P-008



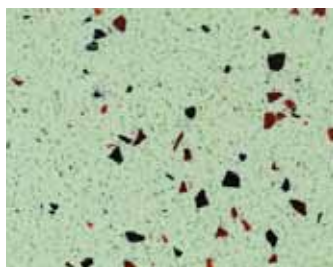
Kombu Milk, P-014



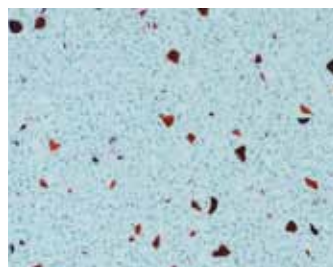
Kulta, P-015



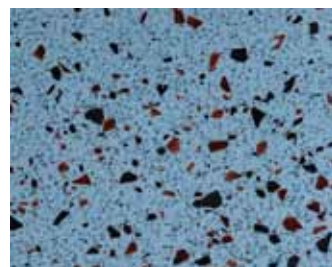
Cherry Bombshell, P-002



Midori Sour, P-010



Blue Hawaiian, P-011



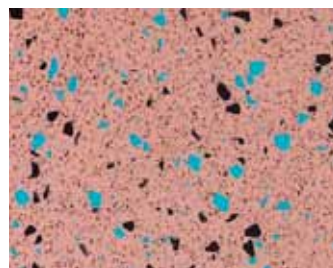
Oceana Mars, P-013



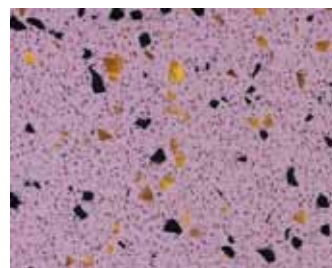
Absinthe, P-004



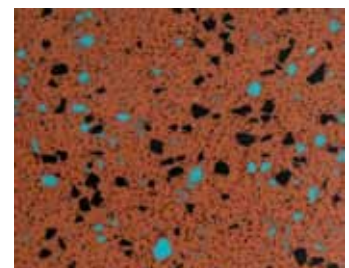
Gin Daisy, P-009



Mudslide, P-003



Violette Royale, P-012



Arrakis, P-016

## GENERAL INFORMATION

- Made from up to 30% recycled post-industrial plastic and natural pigments
- Sleek, modern solid surface material
- Used to create seamless surfaces such as countertops, desks, tables, integrated sinks, bathtubs, shower trays and stools
- Durable, easy to maintain
- 100% recyclable
- Developed for designers, by designers

Find us on  **BIMsmith** and **MasterSpec**

# DURAT PALACE

Available through  
**CaraGreen**  
Healthy Building Materials  
[www.caragreen.com](http://www.caragreen.com) • 919.929.3009  
[info@caragreen.com](mailto:info@caragreen.com)

