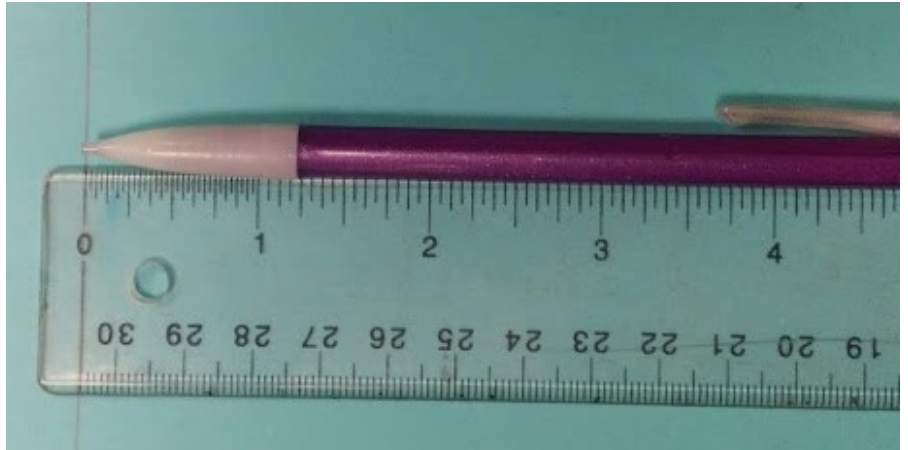


Photographing Voids in GEOS Recycled Glass Surface

Step1:

Place a pencil or pen next to the inches side of a ruler/ tape measure.



Step 2:

Hold the pencil/pen vertically, place the tip into the deepest part of the void on your countertop. Take a zoomed in picture.



Step 3:

Lay the pen/ pencil on the countertop with the tip pointing at the void. Step back and take a zoomed out picture.

